

St Albans Office
10 High Street, St Albans
Herts AL3 4EL
01727 228428
stalbans@cassidyandtate.co.uk

Marshalswick Office
59 The Quadrant, St Albans,
Herts AL4 9RD
01727 832383
marshalswick@cassidyandtate.co.uk

Wheathampstead Office
39 High Street, Wheathampstead,
Herts AL4 8BB
01582 831200
wheathampstead@cassidyandtate.co.uk

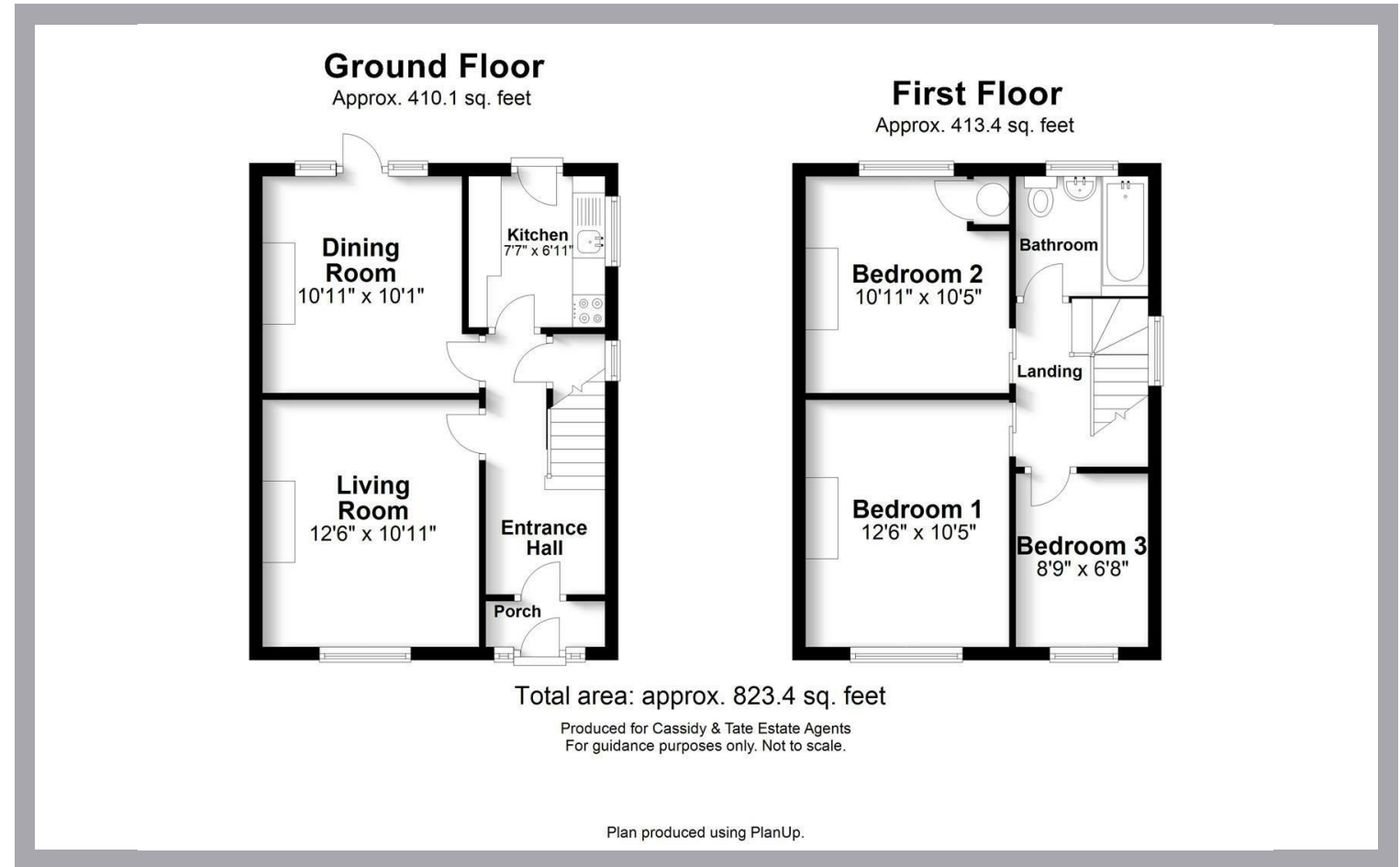
Knightsbridge Office
45 Pont Street, Knightsbridge
London SW1X 0BD
020 7629 9966
26@theknightsbridgeoffice.co.uk

Cassidy
& Tate
Your Local Experts



Award Winning Agency

LONGACRES
ST. ALBANS
AL4 0DR



Cassidy & Tate have taken all reasonable steps to ensure the accuracy of the details supplied in our marketing material however, details are provided as a guide only and we advise prospective purchasers to confirm details upon inspection of the property. Cassidy & Tate will not be held liable for any costs which are incurred as a result of discrepancies.

All The Ingredients Needed For A Fabulous Lifestyle

A chain free three bedroom semi detached property located in a popular residential location within walking distance to the Ofsted outstanding Oakwood Primary and Beaumont Secondary schools. This home enjoys a large west facing rear garden backing onto Longacres Park and has potential to significantly extend and modernise, subject to planning. The ground floor accommodation briefly comprises entrance hall, lounge, dining room and kitchen. On the first floor, there are three bedrooms and family bathroom. Externally, there is a sunny westerly facing rear garden and potentials for off road parking to the front. For the professional/commuter the mainline railway station is approximately 1.2 miles away with Alban Way in close proximity.



Specialists in Bespoke Properties

- Semi Detached Home
- Beaumont Catchment
- Need Of Modernisation
- No Upper Chain
- Three Bedrooms
- Scope To Extend
- West Facing Garden
- Council Tax E £2,559



Energy Efficiency Rating	
	Potential
Very energy efficient - lower running costs	
(92 plus) A	88
(81-91) B	
(69-80) C	
(55-68) D	
(39-54) E	
(21-38) F	
(1-20) G	
Not energy efficient - higher running costs	
Current	53
EU Directive 2002/91/EC	

Environmental Impact (CO ₂) Rating	
	Potential
Very environmentally friendly - lower CO ₂ emissions	
(92 plus) A	
(81-91) B	
(69-80) C	
(55-68) D	
(39-54) E	
(21-38) F	
(1-20) G	
Not environmentally friendly - higher CO ₂ emissions	
Current	
EU Directive 2002/91/EC	